

KLT-F8K-S5K3H7 V2.0**Samsung S5K3H7 MIPI Interfaz Enfoque automático 8MP Módulo de cámara**

Módulo de cámara No.	KLT-F8K-S5K3H7 V2.0
Sensor de imagen	S5K3H7
EFL	3.85 mm
F.NO	2.2
Pixel	3264 x 2448
Ángulo de visión	72.9°
Tipo de lente	1/3.2 pulgada
Dimensiones de la lente	8.50 x 8.50 x 5.17 mm
Tamaño del módulo	19.00 x 8.50 mm
Tipo de módulo	Enfoque automático
Interfaz	MIPI

N. ° de pieza del conector de acoplamiento. 24-5804-030-000-829

Conector de acoplamiento en la placa principal. Se vende por separado.



Top-class sensor for
premium mobile application!

Samsung S5K3H7

High speed and low power 8Mpixel sensor

8Mp 1/3.2" 1.4um BSI Pixel Image Sensor provides;

- Video features of 30fps at full 8Mp for zero shutter lag
- Low power camera solution with optimal design
- Outstanding BSI pixel providing clear and sharp still images in low light, YSNR10 82 Lux

SAMSUNG

Samsung S5K3H7

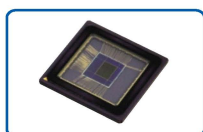
8Megapixel 1/3.2" 1.4um BSI CMOS Image Sensor

Key Features & Benefits



Target Applications

- Feature phones, Smart phones, Tablet and Digital Still Camera



Key Features

- Low power solution at full 8Mp
- Improved BSI pixel for clear and sharp still image
- On-chip Bad Pixel Correction (BPC)

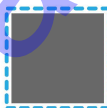
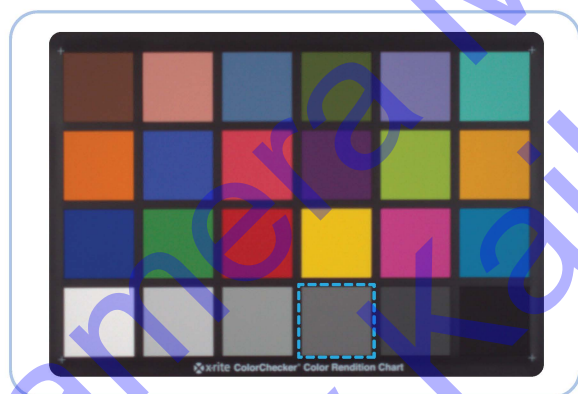


High Speed Frame Rate

- Full 8Mp 30fps enabling crisp still photos
- Video recording: full HD 30fps, HD 120fps, QVGA 240fps

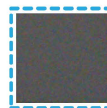
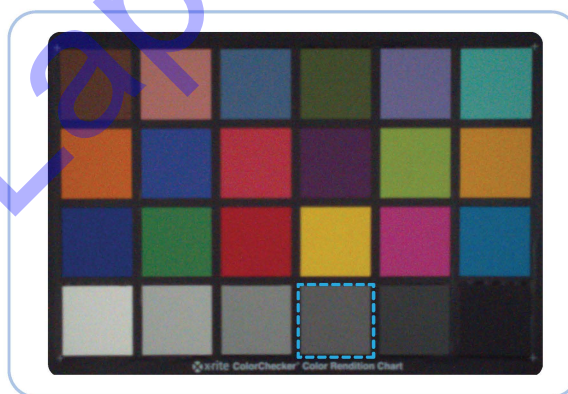
Product Images

700 Lux



Analog gain x1.6, 30fps
Shutter speed 55.5ms
SNR:38.7dB

50 Lux



Analog Gain x16, 30fps
Shutter Speed 33ms
SNR:25.69dB

Availability

S5K3H7 is sampling now with volume production for Q1, 2012.

Samsung Electronics Semiconductor Business

San#24 Nongseo-Dong, Kiheung-Gu, Youngin-City, Kyunggi-Do, Korea

For more information, please visit www.samsungsemi.com

The appearance of all products, dates, figures, diagrams and tables are subject to change at anytime without notice

SAMSUNG